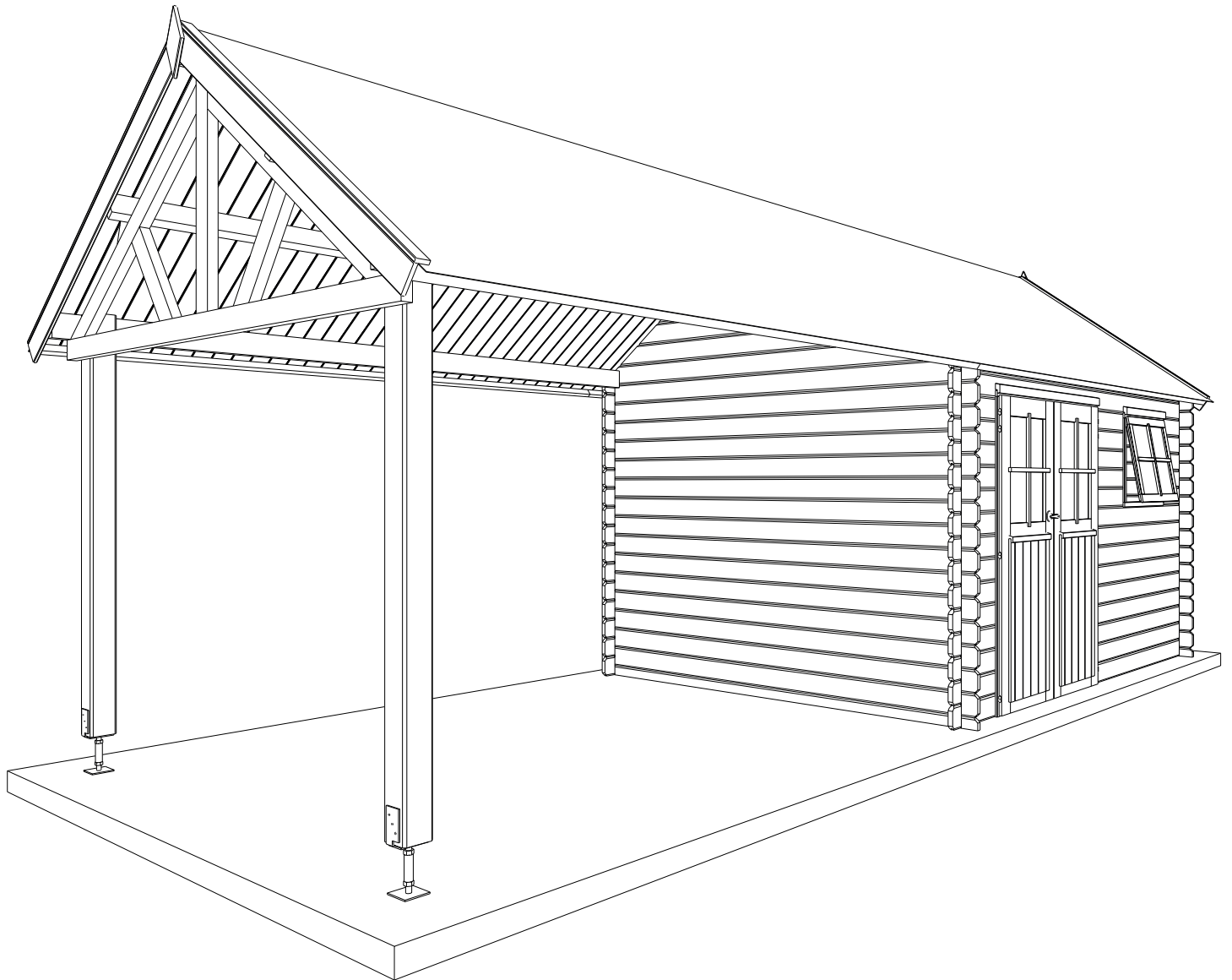


28MM 760X295 CM ZDDDC01 (ART 3602EXT)



GARDENAS

TIMBER GARDEN CONSTRUCTIONS

GEDETAILLEERDE ONDERDELENLIJST

LISTE D'INVENTAIRE DETAILLEE

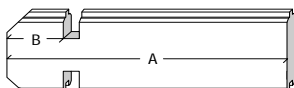
Onderdelenlijst Liste d'inventaire

Typ diamond 28mm 385x295 cm ZDDDC01

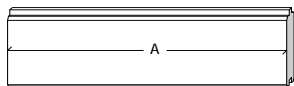
3602

Artikel nr / Dimension # Functie/Fonction
Nr Article A B C

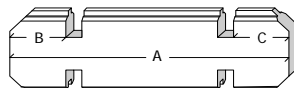
Wandelementen / Eléments des parois



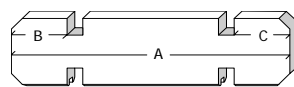
C1/0534/0100	534	100	(-)	<u>19</u>	naast raam & deur voorgevel / côté fenêtre & porte façade
C1/1844/0100	1844	100	(-)	<u>9</u>	onder raam voorgevel / sous fenêtre façade



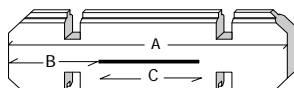
A2/0532	532	(-)	(-)	<u>5</u>	tussen raam & deur voorgevel / entre fenêtre & porte façade
---------	-----	-----	-----	----------	---



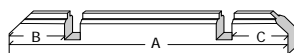
C3/3850/0100/100	3850	100	100	<u>15</u>	achtergevel / paroi arrière
C3/2950/0100/100	2950	100	100	<u>30</u>	zijgevel / paroi latérale



C5/3850/0100/100	3850	100	100	<u>2</u>	bovenste plank achter- & voorgevel / planche supérieure paroi arrière & façade
------------------	------	-----	-----	----------	---

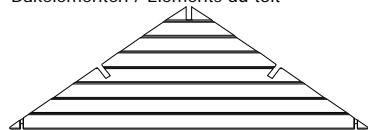


C8/3850/0534/1472	3850	534	1472	<u>1</u>	boven deur / au-dessus porte
-------------------	------	-----	------	----------	------------------------------

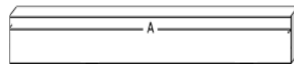


C7/2950/0100/100	2950	100	100	<u>2</u>	basis zijgevel / base paroi latérale
------------------	------	-----	-----	----------	--------------------------------------

Dakelementen / Eléments du toit



CK/S/2950/3/4	2950	(-)	(-)	<u>2</u>	puntgevel te assembleren / pignon à assembler (8 planken/planches)
---------------	------	-----	-----	----------	---



P4/3850/0100/100	3850	100	100	<u>3</u>	dakbalk / poutre du toit
------------------	------	-----	-----	----------	--------------------------



DP/1900	1900	(-)	(-)	<u>72</u>	dakplanchet / planchette du toit
---------	------	-----	-----	-----------	----------------------------------

Afwerkingselementen / Eléments de finition



SRD/0807	807	(-)	(-)	<u>2</u>	sierlat boven raamkader / latte de finition cadre de fenêtre
SRD/1502	1502	(-)	(-)	<u>2</u>	sierlat boven deurkader / latte de finition cadre de porte



FSL/1920	1920	(-)	(-)	<u>4</u>	frontale sierlat / latte de finition frontale
----------	------	-----	-----	----------	---



SSL/1920	1920	(-)	(-)	<u>4</u>	stormsierlat op het dak / Latte de finition sur le toit
----------	------	-----	-----	----------	---



S	(-)	(-)	(-)	<u>2</u>	schildje / ecusson
---	-----	-----	-----	----------	--------------------



ZSL/3850	3850	(-)	(-)	<u>2</u>	Zijsierlat tegen dakplanchet / finition latérale contre planchette du toit
----------	------	-----	-----	----------	---

Dubbele Deur + Deurkader / Porte double + chassis

A/DDC01	<u>1</u>
---------	----------

Opengaand Raam+kader / Fenêtre ouvrante+chassis

A/EOR01L	<u>1</u>
----------	----------

Beslag / Quincaillerie

BESLAG/34	<u>1</u>
-----------	----------

Pakken Shingles / Pacquets de Bardeaux

3184P/1-8	<u>6</u>
-----------	----------

Onderdelenlijst
Liste d'inventaire

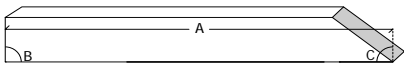
Typ
diamond

28mm 375x295 cm ZDVSP

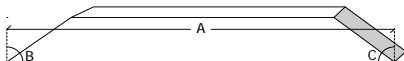
3600AB375

Artikel nr / Dimension # Functie/Fonction
Nr Article A B C

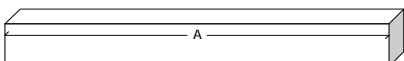
Dakelementen / Eléments du toit



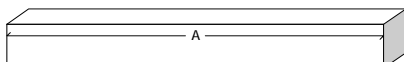
P1R2/0126/90/53 126 90 53 2 dakbalksteun / échantignole
P1R2/0526/90/53 526 90 53 2 buitenste hangstijl / contrefiche



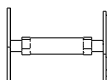
P1R2/1560/36/53 1560 36 53 2 spantbeen / arbalétrier



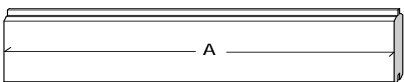
P1/0967 967 (-) (-) 1 middenste hangstijl / poinçon



P1/2694 2694 (-) (-) 1 hanebalk / entrait



P4/3700 3700 (-) (-) 3 dakbalk / panne



P4/3800 3800 (-) (-) 2 ligger / traverse

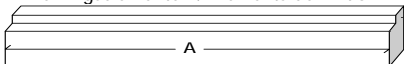
S44/025/0100 100 25 44 3 opvulstukje / pièce pour boucher (voor/pour ref 3603EXT)

S120/120/2000 2000 120 120 2 paal / poteau

UA/120/120 290 120 120 2 U-anker / U-socle

DP/1900 1900 (-) (-) 68 dakplanchet / planchette du toit

Afwerkingselementen / Eléments de finition



ZSL/3700 3700 (-) (-) 2 Zijserlat tegen dakplanchet /
finition latérale contre planchette du toit

Beslag / Quincaillerie

BESLAG/36 1

Pakken Shingles / Pacquets de Bardeaux

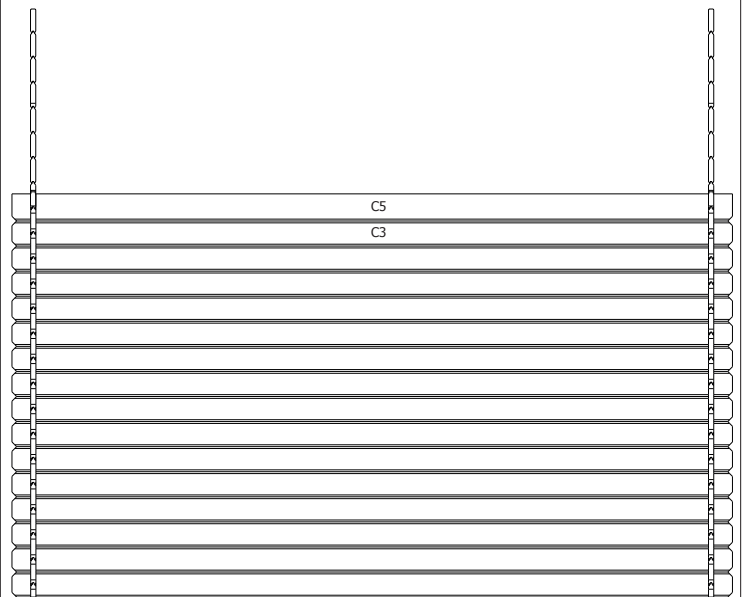
3184P/1-8 5 (6 voor/pour ref 3602EXT375)

28MM 385X295 CM ZDDDC01 (ART3602)

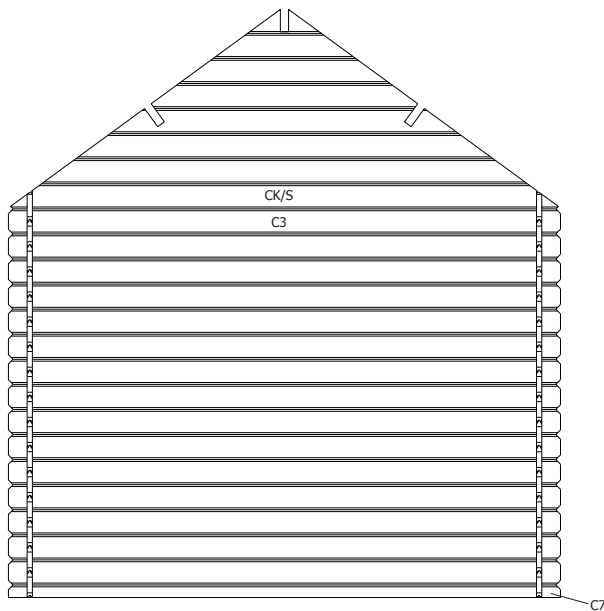
VOORZIJDDE - FACADE



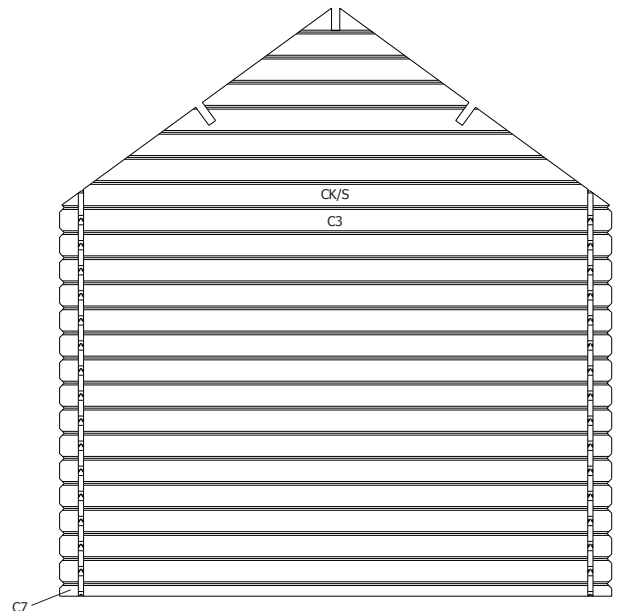
RUGZIJDDE - PAROI ARRIERE



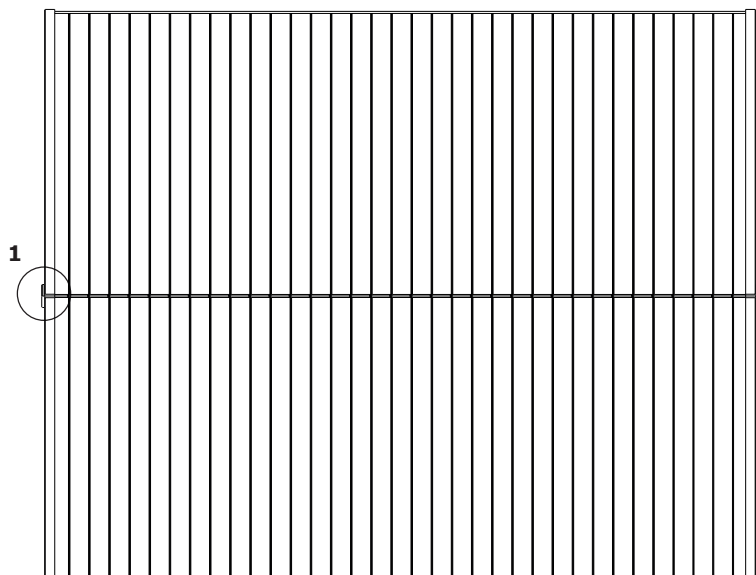
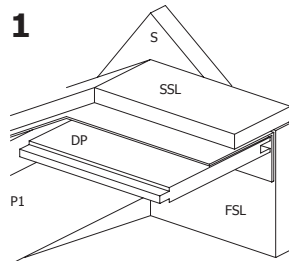
ZIJWAND - PAROI LATERALE



ZIJWAND - PAROI LATERALE

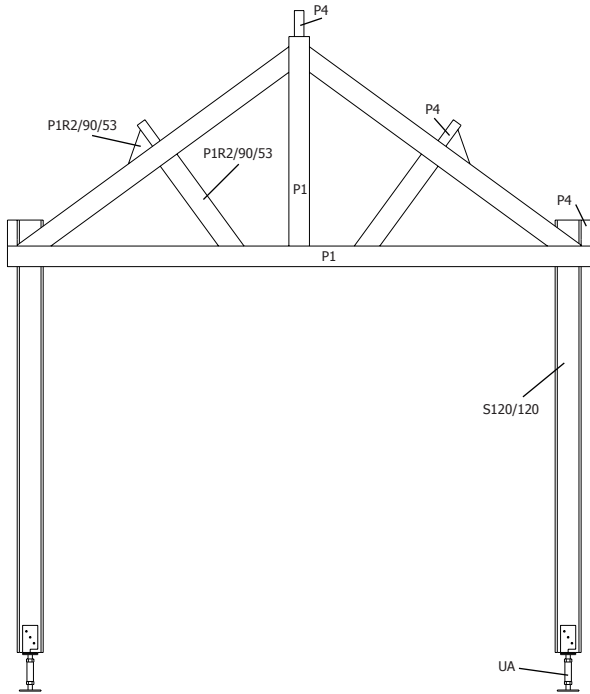


DAK - TOITURE

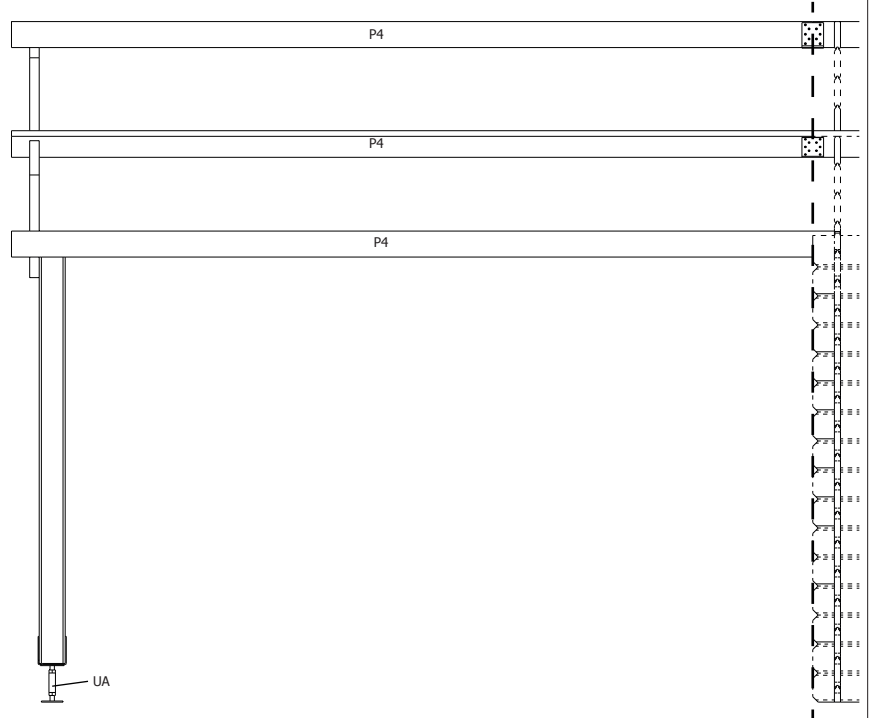


28MM 375X295 CM ZDVSP (ART 3600AB375)

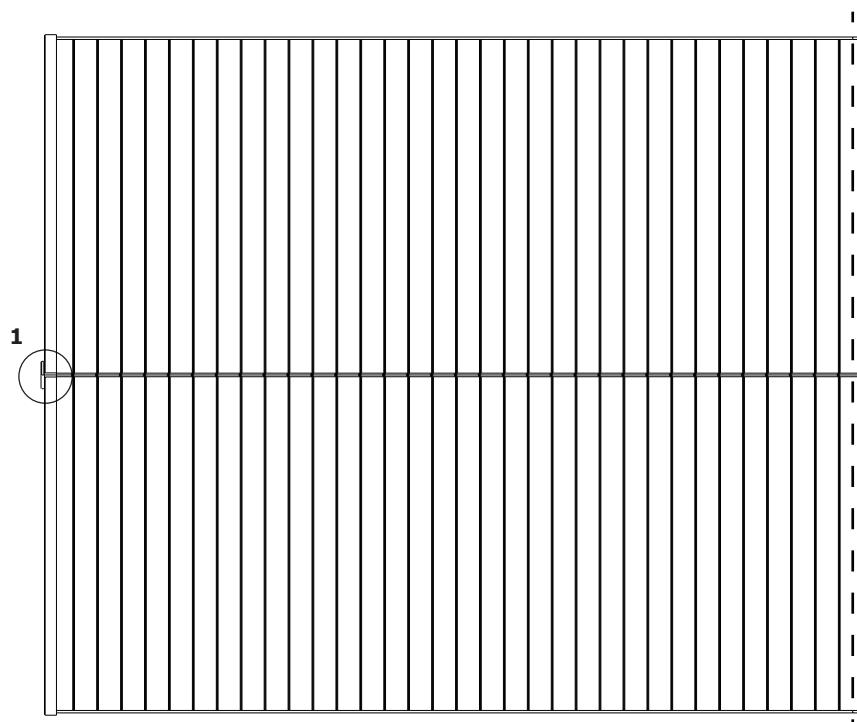
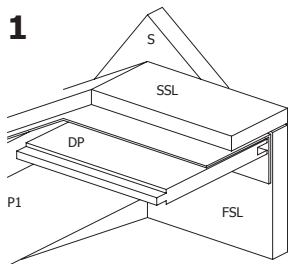
ZIJAANZICHT - VUE LATÉRALE

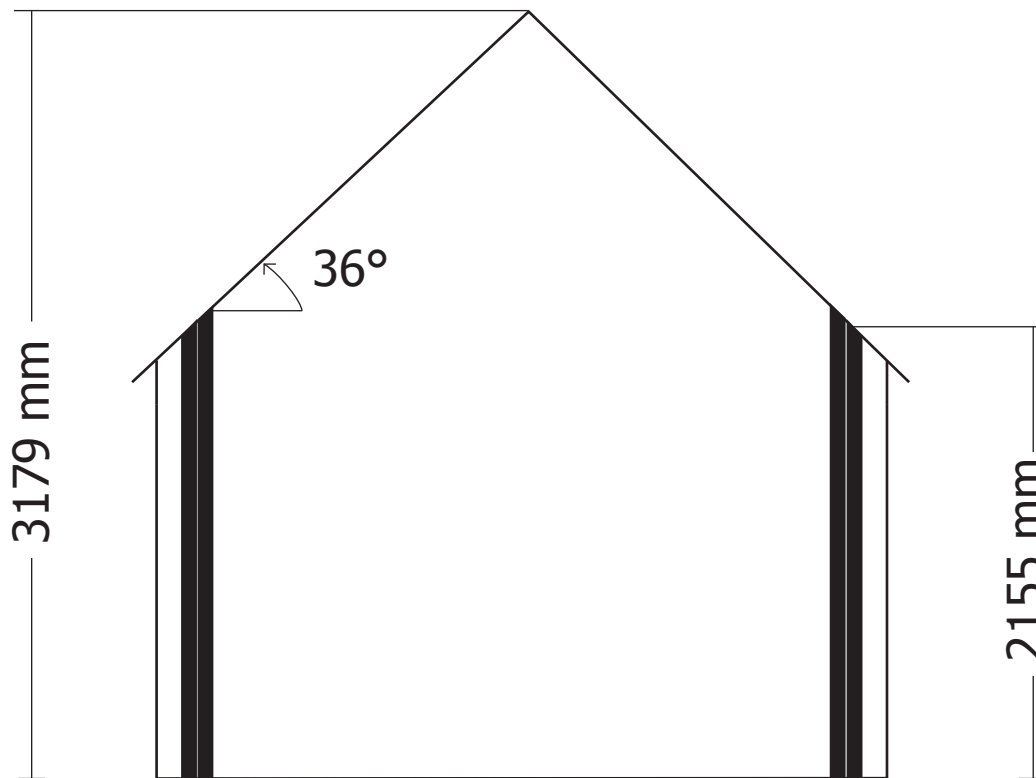
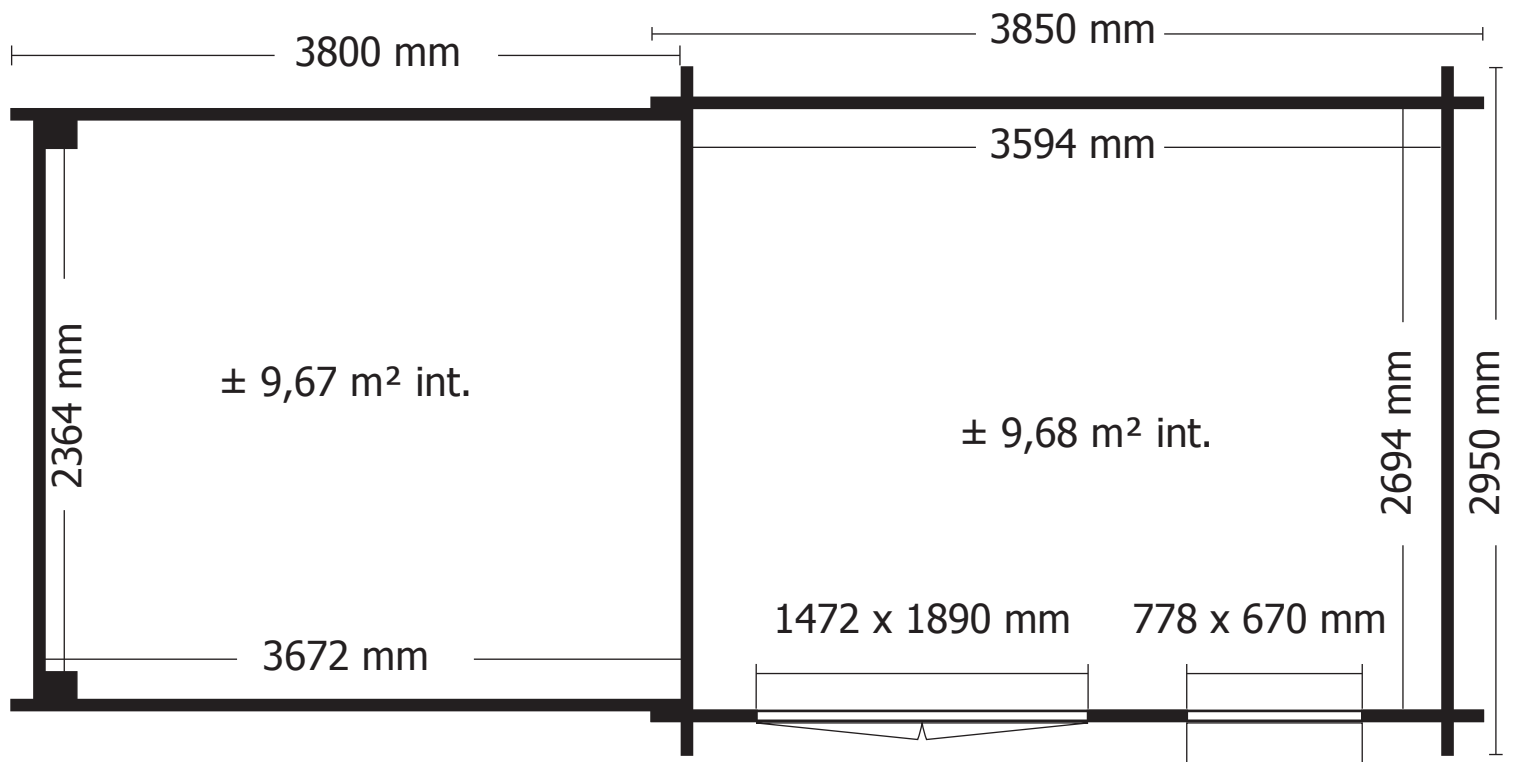


VOORZIJDE - FACADE



DAK - TOITURE





OPGELET : Behandel **ELK** onderdeel grondig aan alle zijden met een degelijk product dat beschermt tegen zon, weer en wind en tegen insecten en schimmels, **VOOR** de montage.

ATTENTION : Traitez à fond **CHAQUE** élément avec un produit protégeant contre les intempéries, les insectes et les moisissures intérieur et extérieur, **AVANT** le montage .